

# BOOTH THEATRE



# ARTHOUSE

A CO-PRODUCTION OF  
BU COLLEGE OF FINE ARTS SCHOOL OF THEATRE  
AND BU COLLEGE OF COMMUNICATION  
DEPARTMENT OF FILM & TELEVISION

**APRIL 27 - MAY 6, 2023**



B O S T O N U N I V E R S I T Y

# A NOTE FROM THE CFA DEAN



I have yet to meet a successful theatre artist who has not worked professionally in television and film. Similarly, I do not know a film actor or director who does not harbor a desire to experience the thrill of storytelling

before a live audience. Yoda just might say: much in common have stage and screen.

*Art House* brings together arts innovators who study on opposite sides of campus but share a common passion for narrative and the visual arts. Today, this glorious Booth Theatre which previously has been transformed into a Shakespearean theatre, an opera house, and even a jazz club, becomes a soundstage for a live taping (with a twist) of a new television pilot.

Welcome to the Joan & Edgar Booth Theatre! We built this building for you. I am glad you are here.

**- Harvey Young**  
*Dean, College of Fine Arts*

A CO-PRODUCTION OF BOSTON UNIVERSITY  
COLLEGE OF FINE ARTS SCHOOL OF THEATRE AND  
COLLEGE OF COMMUNICATION DEPARTMENT OF FILM & TELEVISION

# ART HOUSE

A BEHIND-THE-SCENES LOOK AT THE MAKING OF  
AN ORIGINAL LIVE-ACTION TV COMEDY PILOT

**APRIL 27 - MAY 6, 2023**  
**JOAN & EDGAR BOOTH THEATRE**

820 COMMONWEALTH AVE. BROOKLINE, MA 02446

## WRITERS

**ABE AKINSETE**  
**IAN AQUINO**  
**MADDEY BEDENKO**  
**SARAH CRAIG**  
**MIRA DHAKAL**  
**JULIA GLICKSMAN**  
**ELLA GULLION**

**ZACK KAPLAN**  
**SARAH KLEIN**  
**ASHLEY MAKUWA**  
**OLIVIA MALEK**  
**NICK MASON**  
**JAMESON MURRAY**  
**EDWIN O'NEILL**

**HANNAH SCHREIBER**  
**CHARLOTTE SCHUSTER**  
**AMANDA SCHNEIDER**  
**JOE SIGMAN**  
**SAMIR SINGH**  
**BRIDGET WIXTED**

---

DIRECTOR  
**ELI CANTER**

DIRECTOR OF PHOTOGRAPHY  
**DINGHAO ZHANG**

PRODUCTION DESIGNER  
**STEVEN VELASQUEZ**

LIGHTING DESIGNERS  
**MOLLY BEALL**  
**CELESTE DELGADILLO**

SCENIC DESIGNERS  
**ANNA VIDERGAR**  
**SARAH LLOYD**  
**MARC ANDREA VENTO**

SOUND DESIGNER  
**SAM BLISS**

COSTUME DESIGNER  
**LISA VICTORIA COLEMAN**

PRODUCTION STAGE MANAGER  
**SIERRA HOSS**

PRODUCTION MANAGER  
**GRECIA HERNANDEZ-  
RAMIREZ**

PRODUCER / 1<sup>ST</sup> AD  
**MAGGIE BORGEN**  
ASSOCIATE PRODUCER/  
2<sup>ND</sup> AD/SCRIPT SUPERVISOR  
**VALERIA HERNÁNDEZ**

---

## WITH

**AIDAN CLOSE**  
**ACSA WELKER**  
**MICHAELA LAZAROU**

**KATIE MCRAE**  
**TYLER STATKEVICUS**  
**SAMUEL REGUEROS**

**CHARLEY DANGER**  
**TORI VAN LOON**

# A NOTE FROM THE DIRECTOR OF THE SCHOOL OF THEATRE AND THE CHAIR OF FILM & TELEVISION



**W**elcome to our crazy idea. This energetic experiment of student writing, acting, directing, designing, and filming is a completely collaborative whirlwind leap into the world that we know as “sitcom.” The situation comedy has been around (arguably) since the turn of the last century, but contemporary audiences know it as a standard television and now streaming option of episodic story telling following a fixed group of characters. The classic sitcom (*I Love Lucy*) is something of a hybrid between a play and a film. There is a long tradition of filming TV sitcoms with multiple cameras in front of a live audience. Scenes are shot in order but might be repeated. This is what you will experience, except for May 6, when *Art House* will be performed theatrically and without cameras.

Tonight, you will meet the group of *Art House* characters. What you will watch is more than just a fun and funny way to spend an evening, but it is the BU School of Theatre and the Department of Film and Television learning how to pat our head and rub our tummy at the same time. You are watching the beginning of a process that will end with editing it all into a finished sitcom TV pilot. We hope you will join us when the entire *Art House* episode one is revealed next school year at a special screening. Join us in the spirit of project development and enjoy this moment of craft honing, technique sharpening, and creativity building.

**Susan E. Mickey**, *School of Theatre Director*

**Paul Schneider**, *Department of Film and Television Chair*

# WRITERS' NOTE

**What if the siblings are twins? What if Mitchell had a sad past? What if her name isn't Barb? What if...what if...what if...**

January 2022: 14 writers, 2 professors, 16 masks, and a whole lot of funny sat in a classroom. Our ambitious goal: write 3 episodes of an original sitcom. With just one sentence setting the scene, we shaped a central plot. Each of us had different ideas and visions, which made the arguments—I mean, discussions, all the more spirited. Every writer brought a different perspective and sense of humor to the show, which is what I love most about it. There is no one type of joke or one sense of humor. There's something in it for everyone, and you can see how the various writers have left their mark. After a few meetings, we realized we weren't getting to three episodes. We decided to focus on just the pilot. We hashed out the characters: their personalities, backgrounds, and desires.

When we weren't talking about Jewish mothers or shampoo stickers, we were building a world. We constructed conflict, developed our characters, and brought in more writers. For a year, we wrote and pitched jokes. So many jokes. We were just trying to make each other laugh. When someone chuckled, the crowd echoed, "Write that down!" On the other hand, so many awkward silences were sat through when no one laughed at the pitch you were most excited about. "Let's just leave it in and see what happens," the jokester suggested. "But it's not funny..." was typically the brutal response. Then came rewrites. And more rewrites. And then rewriting the rewrites. And then rewriting the rewritten rewrite. We wrote a lot, created a lot, and laughed a lot. I know I speak for all the writers when I say there is an insurmountable level of passion, devotion, and, hopefully, some humor in this story. The characters became real to us (RIP Holden), and we know they will feel real to you. We hope you laugh watching this as much as we laughed while writing it. Although that's probably impossible.

~ Sarah Klein

# DIRECTOR'S NOTE

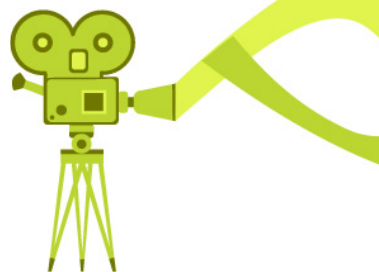
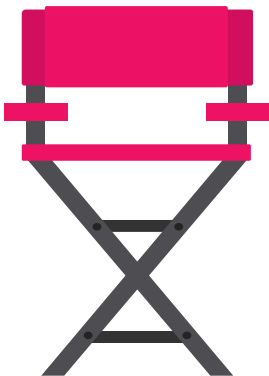
**W**elcome to *Art House* – Boston University's first ever original sitcom TV pilot! This has been a giant, multi-semester project and collaboration between the College of Communication's Department of Film and Television and the College of Fine Arts School of Theatre.

This show is a comedic TV pilot about a young woman, Barb, who arrives back at her childhood home after a breakup, only to find that her brother has transformed the home into a space for artists...an arthouse!

I've had the pleasure of collaborating with fellow film students, acting students, and design students throughout this ambitious process. Prior to tackling this project, I made many short films with a single-camera set-up, but this is my first time shooting with multiple cameras and with a live studio audience.

I'm so honored to end my college experience working with so many talented people – each of whom have worked tirelessly to make this script come to life. I hope you enjoy watching and have some good laughs (and maybe you'll learn a thing or two about sitcom production while you're at it)!

~ Eli Canter, *Director*



# CAST

*in order of appearance*

Lil Bub

**AIDAN CLOSE**

Barb Shipley

**ACSA WELKER**

Summer Sage

**MICHAELA LAZAROU**

Candy Baker

**KATIE MCRAE**

Floppy Shipley

**TYLER STATKEVICUS**

Mitchell Hendricks

**SAMUEL REGUEROS**

Albert

**CHARLEY DANGER**

Percy Bennet

**TORI VAN LOON**

# CORE COLLABORATORS

## WRITERS

Abe Akinsete  
Ian Aquino  
Maddey Bedenko  
Sarah Craig  
Mira Dhakal  
Julia Glicksman  
Ella Gullion  
Zack Kaplan  
Sarah Klein  
Ashley Makuwa  
Olivia Malek  
Nick Mason  
Jameson Murray  
Edwin O'Neill  
Hannah Schreiber  
Charlotte Schuster  
Amanda Schneider  
Joe Sigman  
Samir Singh  
Bridget Wixted

## DIRECTOR

Eli Canter

## DIRECTOR OF PHOTOGRAPHY

Dinghao Zhang

## PRODUCTION DESIGNER

Steven Velasquez

## SCENIC DESIGNERS

Anna Vidergar  
Sarah Lloyd  
Marc Andrea Vento

## LIGHTING DESIGNERS

Molly Beall  
Celeste Delgadillo

## SOUND DESIGNER

Sam Bliss

## COSTUME DESIGNER

Lisa Victoria Coleman

## PRODUCTION STAGE MANAGER

Sierra Hoss

## PRODUCTION MANAGER

Grecia Hernandez-Ramirez

## PRODUCER / 1<sup>ST</sup> AD

Maggie Borgen

## ASSOCIATE PRODUCER / 2<sup>ND</sup> AD / SCRIPT SUPERVISOR

Valeria Hernández



# ASSOCIATE COLLABORATORS

ASSOCIATE PRODUCTION MANAGER

PRODUCTION ASSISTANT

SCENIC PAINT CHARGE

PROPS COORDINATOR

TECHNICAL DESIGNERS

TD PROJECT MANAGER

PRODUCTION ELECTRICIAN

ASSISTANT PRODUCTION ELECTRICIAN

GAFFER

GRIP

ASSISTANT COSTUME DESIGNER

ASSISTANT SOUND DESIGNER

SOUND ENGINEER

ASSISTANT SOUND ENGINEER

SOUND MIXER

SOUND

CAMERA OPERATORS

1<sup>ST</sup> AC / CABLE WRANGLER

EDITING

River Hayes

Sebastian Sachs

Guthrie Morgan

Sarah Lloyd

Rebecca Karlin

Matthew Kadam

Reanna Valencia

Noah Wrafter

Davin Martin

Maxamillian Tanzer

Brianna Altman

Gaby Tovar

Elliot Dupcak

Gage Baker

Rory Shea

Roberta Leonardi

Edison Sun

Sukhvinder Bains

Jake Gustin

Frank Wu

Marina Mingnan Xu

Addison Cummings

Nathan Clough

June Oh

Melanie Menkiti

Natalie Williams

# PRODUCTION CREW

AUDIO 3

SOUND BOARD OPERATOR

WARDROBE HEAD

WARDROBE SUPERVISOR

LIGHT BOARD OPERATOR

RUN CREW

PHOTOGRAPHER

HOUSE MANAGER

FRONT OF HOUSE

Liz Anderson

Rowan Benz

Cameron Carcasson

Andrew Wehling

Olivia King

Taylor Needleman

Lillian Devlin

Claire Mitchell

Rodrigo Larios

Zack Kautter

Dylan Mejil

Amanda Miller

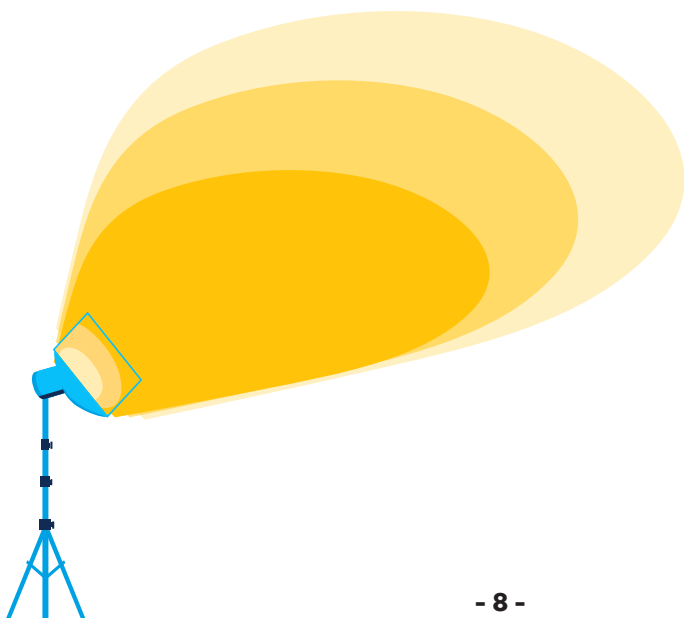
Leo Flora

Nini Lin

Yiling Lu

Janie Mcrae

Olivia Kelly



# FACULTY & STAFF

## FILM FACULTY

### FILM & TV CHAIR

Paul Schneider

### PRODUCTION COORDINATOR

Jamie Companeschi

### WRITING

Adam Lapidus

Bill Braudis

### CINEMATOGRAPHY

Tim Palmer

### SOUND

Chris Anderson

### LEAD STUDIO ENGINEER

Tristan Olly

## THEATRE FACULTY & STAFF

### PERFORMANCE FACULTY & STAFF

Ashleigh Reade • Christine Hamel • Chris Edwards  
Clay Hopper • Harry Hobbs • Joshua Noble • Katie Nelson  
Kirsten Greenidge • Kristin Leahey • Malika Oyetimein  
Melisa Pereyra • Melodie Jeffery-Cassell • Michael Kaye  
Michael Swartz • Molly Jodka • Patrese McClain  
Rachel Moss • Susan Mickey • Wendy Goldberg • Yo-EL Cassell

### DESIGN & PRODUCTION FACULTY & STAFF

Aja Jackson • Ben Sigda • Cristina Todesco • David Remedios  
Denise Wallace-Spriggs • Diane Fargo • Elaina Ciccone  
Gg Martel • Haydee Zelideth • Jacob De Sousa  
James McCartney • Jim Noone • Joel Brandwine  
John Kontogiannis • Jon Savage • Jorge Arroyo • Mark Stanley  
Nancy Leary • Penney Pinette • Renee E. Yancey

## CORE COLLABORATORS

**Eli Canter (Director)** Eli grew up in Larchmont, New York, where he developed a passion for movies at an early age. Since high school, Eli has written, directed, and edited many short films, both inside and outside of class. He received recognition for his work at the 2022 & 2023 BU Redstone Film Festival.

**Anna Vidergar (Scenic Designer)** (she/her) is a junior Theatre Arts - Design & Production major concentrating in scenic design. Previous BU credits include *Little Women* (Assistant Scenic Designer), *La Hija de Rappaccini* (Scenic Designer), and *Laure* (Scenic Designer), among others. You can find her on Instagram: @designeragvid

**Sarah Lloyd (Scenic Designer)** is a Scenic Design major at Boston University, who has worked on several productions such as *Shakespeare in Love*, *Once*, and *Our Town*. Sarah is excited to continue designing and thanks her friends and family for their support.

**Marc Andrea Vento (Scenic Designer)** (he/him) is a Scenic Design major at Boston University, who has worked on several BU shows such as *Walking the Tightrope*, *Patterns of Wind*, *Exit the King*, and the upcoming BU Booth show *Art House*. Upon graduating, he hopes to further his education in the arts both locally and internationally.

**Sierra Hoss (Production Stage Manager)** Sierra (she/her) is a senior pursuing her BFA in Stage Management. Some of her credits at BU include *El Nogalar* (SM), *Our Town* (PM), and *Patterns of Wind* (SM). She has also been involved in *And Your Little Dog Too* (PSM), and *Romeo and Juliet* (ASM) at Apollinaire Theatre Company. She would like to thank her friends and family, especially her mom, for all their love and support.

**Dinghao Zhang (Director of Photography)** Courageous, strong, and incredibly dashing, Samir Singh helped write the pilot for *Art House* and created the show's most intelligent character, Lil Bub. Obviously.

**Grecia Hernandez- Ramirez (Production Manager)** Grecia is a Mexican-born artist currently based in Boston. She is a versatile creative with a passion and experience for film, photography, theatre, and art, with a BFA in Creative Writing, and Theatre, Film, and Digital Production from UC Riverside. Her Masters in Production Management from Boston University will be completed this spring.

**Steven Velasquez (Production Designer)** is a third year MFA candidate in scene design at Boston University. Steven will be starting as an adjunct professor of Scene Design this fall at Five Towns College. He has won the Don Childs and Marvin Simms award for Scene

## CORE COLLABORATORS

Design and has been nominated for three Broadway World awards. Recent credits include: *Mankind* (Boston University), *West Side Story* (Argyle Theatre), *Kinky Boots* (Forestburgh Playhouse), *Georgia McBride* (Boston University), *Everyday Life...* (Arts Emerson). Upcoming credits include: ... *Leonard Pelkey* (Forestburgh Playhouse), *Matilda* (Forestburgh Playhouse), *Grease* (Argyle Theatre). Steven-Velasquez.com

### **Sam Bliss (Sound Designer)**

Sam Bliss (D-Connecticut) is a senior Sound Design major who has a passion for fusion and jazz music. He has combined his passions for music and theater and film into a thriving sound design experience. Please do not look him in the eyes. He is thankful for the new friends and new memories he was able to make this year.

### **Maggie Borgen (Producer/1st AD)**

Maggie is a sophomore Film & TV major in Kilachand Honors College. She is the showrunner, co-head writer, and an actor in the mockumentary web series "Admitted." She played the role of Dylan on BUTV's soap opera "Bay State" and is a member of DKA, the professional film fraternity.

### **Molly Beall (Lighting Designer)**

(she/her) is a third-year Lighting Design major. Some of her recent projects include *Uncle Vanya* (Lighting Designer), *La Hija de Rappaccini* (Assistant Lighting

Designer), and *If I Were You* (Production Electrician). She would like to thank her family back home in Colorado for their support!

### **Celeste Delgadillo (Lighting Designer)**

Celeste is a junior lighting design major. She is SO excited the time has finally come for *Art House*! She has been looking forward to this show all year and can't wait for you to see it. She has learned so much about film/TV during this process and hopes to take all her new found knowledge with her in her career.

### **Lisa Victoria Coleman (Costume Designer)**

Second-year MFA Costume Design candidate. Aspiring goals to design for film/TV/opera and theatre. Costume Designer for the Film *Bad Voodoo*, Wardrobe Production Assistant for Television series *East New York*, costume designed last year's Fringe Festival opera *La Hija De Rappaccini*.

### **Valeria Hernández (Associate Producer/2<sup>nd</sup> AD/Script Supervisor)**

Valeria Hernández is a sophomore majoring in Film and Television with a minor in Business Administration. She is an aspiring producer and entertainment executive with previous experience producing television series, film festivals and short films. She also has experience working in film acquisitions and distribution at the Cannes Film Festival. ●

# BOSTON SHOWCASE

**Monday, May 8, 2023**

Joan & Edgar Booth Theatre and  
College of Fine Arts Production Center

## **INTRODUCING THE CLASS OF 2023!**

*Presented by Boston University School of Theatre, our annual Theatre Showcase is a celebration of the graduating class and the cohort's formal introduction to the professional theatre community. Join us to meet this class of exceptional theatre artists! Learn more at [bu.edu/cfa/theatre/showcase](https://bu.edu/cfa/theatre/showcase).*



**Boston University** College of Fine Arts  
School of Theatre



## ART HOUSE CAST

**Aidan Close (Lil Bub)** (he/him) is a senior Acting major, with a concentration in Musical Theatre. Past credits: *Once* in Booth Theatre, *Timon of Athens* at the Royal Academy of Dramatic Art, *Much Ado About Nothing* and *Henry VI Part III* at Prague Shakespeare Company, as well as originating the role of Avery in *Incels and Other Myths* at Boston Playwrights' Theatre.

**Acsa Welker (Barb Shipley)** Acsa Welker is a senior currently working towards her BFA in Acting at Boston University School of Theatre. Previous BU credits include Amy in *Dry Land* and Gertrude in *Hamlet*. She would like to thank her family for their constant love and support.

**Michaela Lazarou (Summer Sage)** is an Acting major at Boston University, who has been involved in BU shows such as *Deadman's Cellphone*, *Antigone* or *And Still She Must Rise Up*, and *Let the Right One In*. She has loved working alongside her classmates at BU and is excited to work on future projects together at the University and after graduation.

**Katie McRae (Candy Baker)** (she/her) is an Acting major who has worked on several shows such as *Uncle Vanya*, *Patterns of Wind*, and *Othello*. She has always loved acting and is thankful for the support of her family, friends, and fiancé.

**Tyler Statkevics (Floppy Shipley)** is a senior Acting major at Boston University. He has worked on *A Seagull*, *Colossal*, and *Mankind*. Tyler

would like to thank his family and friends for their support!

**Samuel Regueros (Mitchell Hendricks)** Sam Regueros is an actor born in Bogotá, Colombia. Sam is graduating from Boston University, with a BFA in Acting this spring. Sam is excited to continue pursuing his career in acting and hopes to bring more diverse and inclusive stories to the stage and screen. He is very excited and grateful to be finishing his journey in BU by being in *Art House*.

**Charley Danger (Albert)** (he/him/his) starred in Oscar award-winning director Cynthia Wade's narrative short, *Sproutland*, which began its release in April 2021 at the Florida Film Festival. The film has won numerous awards and has been featured in over twenty festivals, with more slated for the coming months. He is an actor from New England who is currently in his ultimate year at Boston University School of Theatre. In his junior year, he completed a semester of study in England at the London Academy of Music & Dramatic Art (LAMDA). For more information visit [charleydanger.com](http://charleydanger.com).

**Tori Van Loon (Percy Bennet)** Victoria Van Loon (she/her) is a senior at Boston University School of Theatre, months away from receiving her BFA in Acting. She has had the pleasure of working on several immaculate BU productions such as *Grounded*; *Machinal*; and *Once: A New Musical*. She would like to thank her parents, her brother and sister for being her honorary stage parents, her friends, and of course, Shamus. ●

# ART HOUSE WRITERS

**Abe Akinsete** - Abe bothered professors Lapidus and Braudis into letting him take this class despite not being particularly adept at being 'funny'. He's off to grad school to work on getting better at that in the fall, and is genuinely grateful to have been part of the *Art House* writer's room.

**Ian Aquino** - Ian is senior in COM who enjoyed COMmunicating with his COMedy COMMunity to COMbine forces and COMe up with such a COMmendably COMedic show. If you couldn't tell, any puns in the show probably have something to do with him. He hopes *Art House* makes you laugh... at least once. <3

**Maddey Bedenko** - Madeleine Bedenko (she/her) is a Theatre Arts major at Boston University, who has worked on multiple shows at Boston University as an actor, dramaturg, music director, stage manager, and swing. She is one of the head writers and showrunners for BU's premier sketch group, *Going Down* (a STAMP production). Madeleine would like to thank her family for everything they do to support her.

**Mira Dhakal** - Mira graduated from BU in 2022 with a degree in Film and Television, and is currently working as a strategist for National Geographic in DC. Being a part of this writer's room is one of her favorite memories from school, and she is so excited to see the show come to life!

**Sarah Klein** - I study Film & TV with a passion for math and comedy. Do those go together? Nope, but when I say I'm a film major who loves math, people usually laugh! Additionally, I work at Red Sox Productions producing and managing video content for the Boston Red Sox and Fenway Park.

**Ashley Makuwa** - Hi! I'm Ashley, a junior in Film and Tv and a sitcom lover. My favorite thing about writing on *Art House* was all the time we spent debating on the

spelling of the word duffle...and as of today we still haven't decided.

**Jameson Murray** - Murray is an actor and silver medal recipient in filmmaking at his regional NAACP ACT-SO competition. His lead role in short film, "Late to the Party", is a 2023 Atlanta Film Festival selection. While studying at Boston University, Murray was a creator of "Going Down," a weekly sketch comedy show. After receiving his BFA from Boston University, he will continue working in tv and comedy in NYC, LA, and Atlanta.

**Edwin O'Neill** - While I've graduated from the Art House I've made my new home in the walls of the Braudis house. No matter how hard he tries I will not leave. Squatters rights <3

**Hannah Schreiber** - Hannah is a senior at Boston University pursuing a dual degree in Film/Television and English. Born and raised in Cherry Hill, New Jersey, she grew up with a passion for film, television, and literature. After graduating this spring, Hannah hopes to pursue a career in screenwriting, hoping to one day bring her stories to life.

**Charlotte Schuster** - My name is Charlotte Schuster, and I am a senior from New York City. I am studying Film & Television with a minor in PR. I've been involved with *Art House* as a writer since last winter, and I'm excited for everyone to see the final product!

**Joe Sigman** showed up to class on time everyday. He graduated in January of 2023 and now shows up on time everyday as a Production Coordinator at Hulu. He hopes he chose correctly between everyday and every day. If not, so be it.

**Samir Singh** is an aspiring television writer and screenwriter who helped develop the *Art House* pilot. A key member of BU's sketch comedy team Slow Children at Play, Samir is a comedy veteran at BU who is extremely excited to have contributed to the show. He's really strong too. ●



**Boston University** College of Fine Arts  
School of Music: Opera Institute  
and School of Theatre

**BOSTON  
UNIVERSITY**

# ALCINA

Music by Georg Freidrich Händel  
Libretto by Antonio Fanzaglia

**William Lumpkin, conductor**  
**Fenlon Lamb, stage director**

*Sung in Italian with English supertitles*

**TSAI PERFORMANCE CENTER**  
**685 COMMONWEALTH AVE, BOSTON**  
**APRIL 27 - 28, 2023**

## ASSOCIATE COLLABORATORS

**River Hayes (Associate Production Manager)** is an Artistic Producer and practice-led researcher in the MFA in Production Management program. BU SOT credits: *Mankind*, *Elephant's Graveyard*. Currently they are examining producing models and expanding to film, television and transmedia storytelling platforms; seeking to transform whose stories are told and who gets to tell them.

**Davin Martin (Assistant Production Electrician)** (he/him) is a first-year student and prospective Lighting Design major at Boston University. He has worked as a freelance designer for shows throughout Massachusetts and enjoys donating his time and resources to community and school theatre organizations. Davin would like to thank Laurel, Dan, and Linnea for their constant support.

**Maxamillian Tanzer (Gaffer)** A senior graduating from BU's Film and TV program, Max loves working on set and collaborating with others. He is proud to be able to collaborate with great filmmakers and theatre technicians on a project of this scale.

**Sebastian Sachs (Production Assistant)** (they/them) is a freshman studying Theater Arts with concentrations in Sound Design and Production Management. Past BU credits include *Let The Right One In* and *El Nogalar*. Selected other credits from the The Park School of Baltimore include *Guys and Dolls*, *The Rhimers of Eldritch*, and *Blue Stockings*.

**Guthrie Morgan (Scenic Paint Charge)** Guthrie is a second-year scenic art certificate student.

**Rebecca Karlin (Technical Designer)** Rebecca is a current junior within School of Theatre; they would like to thank everyone who worked on the production especially their fellow Technical Director and Project Manager for all their support. They are so grateful to be a part of this production and can't wait for the next one!

**Brianna Altman (Grip)** Brianna Altman is a junior double majoring in Film/TV and Advertising. While she is interested in all aspects of filmmaking, art, and advertising, her primary focus is cinematography.

**Gaby Tovar (Assistant Costume Designer)** (they/she/he) is a Theatre Arts D&P major at Boston university, currently studying playwriting/directing, and costume design. They've worked on a number of BU shows, their favorites including, *Laure*, *Mac Beth*, *The Chariot Reversed*, *Little Rowboat*, and *Mankind*. Their goal is to build a career in bringing stories to

**Reanna Valencia (TD Project Manager)** (they/she) is a junior technical production major and art history minor. They want to thank everyone working on this process and hope you make this "Art House" an art home!

**Noah Wrafter (Production Electrician)** Noah is a sophomore

## ASSOCIATE COLLABORATORS

the stage that are not only new, but a voice for the identities they hold.

**Elliot Dupcak (Assistant Sound Designer)** (he/him) is a senior stage management major with a concentration in sound design at Boston University. Previous BU credits include *Proving Up* (SM), *Mansfield Park* (ASM), *Hamlet* (Sound Designer), and *Against a Village* (Playwright and Sound Designer). He is looking forward to his remaining work at BU and beyond that.

**Gage Baker (Sound Engineer)**  
Gage is a sound designer and mixer currently pursuing an MFA in Sound Design at Boston University. Design credits include Catastrophic Theatre and Rec Room. Production credits include Alley Theatre, Hangar Theatre, and Stages Repertory Theatre. He currently mixes the Boston company of Blue Man Group. [gagebaker.com](http://gagebaker.com)

**Rory Shea (Assistant Sound Engineer)** (she/her) is a Sound Design major from Morristown, New Jersey. She would like to thank Justin Timberlake's falsetto for getting her through tough times.

**Sukhvinder Bains (Sound)** A film student at Boston University planning to hone their skills and sound design knowledge through participating as a Sound Assistant on *Art House*.

**Jake Gustin (Camera Operator)**  
Hey there, welcome to *Art House*!  
I'm a junior from the College of Communication and the College of Arts and Sciences, and I can't wait to share some laughs with you real soon!

**Marina Mingnan Xu (Camera Operator)** I am a COM'23 Film & Television student from Suzhou, China. My main focus in the field is cinematography, more specifically camera operation. Crewed many BU student films and operated a lot for BU ESPN live broadcasts, I found my love doing narrative filmmaking and multi-cam production.

**Addison Cummings (1st AC/Cable Wrangler)** is a sophomore majoring in Film and Television. In the *Art House* production, Addison assists in camera operations, setting up shots, and maintaining equipment.

**Nathan Clough (1st AC/Cable Wrangler)** Nathan is a Film & TV senior. Throughout his time at BU, he has completed all the cinematography and production classes and sound mixed on 20 short films. At the 2023 Redstones he won a sound design award for Production III film "Artboy" on which he was the re-recording mixer.

**June Oh (1st AC/Cable Wrangler)**  
I'm a rising senior at Boston University, currently pursuing a degree in Film & Television. My main focus is to tell stories through my visual storytelling skills as a cinematographer.

**Melanie Menkiti (Editing)** Melanie is a Film/TV major whose interests in the medium are editing, cinematography, and sound design. Outside of film, she enjoys weightlifting and writing when she can. She hopes to pursue a full-time career editing more and more shows and films alike.

**Natalie Williams (Editing)** is a senior majoring in Film and Television

## ASSOCIATE COLLABORATORS

and minoring in Deaf Studies. Passionate about storytelling, Natalie loves to help visions come to fruition through post-production. She has worked with WTBU, GMBU, and Strike Magazine Boston. When not editing, Natalie loves to explore Boston, sing, and go thrifting.

**Rowan Benz (Sound Board Operator)** (she/her) is a performance core Freshman at BU who is interested in pursuing the Theatre Arts major. So far, she has worked front of house for *Let The Right One In* and is looking forward to playing Hades in a completely student run production of *Eurydice!* Outside of theatre she loves to play chess and eat oatmeal.

**Taylor Needleman (Light Board Operator)** is a first-year Costume Design major in Boston University School of Theatre. She is so excited to be involved with this collaboration with the College of Communication, and she hopes that you enjoy the show!

**Cameron Carcasson (Wardrobe Head)** is a first-year Theatre Arts Design & Production major concentrating in Scenic Design and Performance, with a minor in visual arts. He loves all things art, puppetry, and of course theatre.

**Zach Kautter (House Manager)** (he/him) is an Acting major at Boston University. Zach is also involved in several sports teams at the school. He would like to thank his family and friends for all their support!

**Dylan Mejil (Front of House)** (they/them) is a Theatre Arts Performance major, concentrating in Movement,

Music Theatre and Costume Design. They are from the Bronx, New York, and although they have yet to perform at Boston University, they are extremely excited to be a part of this production! Instagram: @dylanbrandonmejil

**Amanda Miller (Front of House)** (she/her) is a first year performance major at Boston University. Originally from South Florida, she has been a part of the theater world for the past seven years. She would like to thank her friends and family for their support!

**Leo Flora (Front of House)** (he/him) is a freshman in the Performance Core at Boston University. His favorite roles include Nick Bottom in *Something Rotten*, Templeton in *Charlotte's Web*, and Phaeton in *Metamorphoses*. He also plays the drums and guitar.

**Nini Lin (Front of House)** Nini is a freshman major in FTV. She is a great fan of theater and is really excited to be part of the show.

**Yiling Lu (Front of House)** My name is Yiling Lu. I am an international student who came from China. I am a freshman and currently major in philosophy with a minor in theatre art. I used to lead my high school unison competition and help drama students manage the stage. I look forward to seeing you all!

**Olivia Kelly (Front of House)** (they/she) is an Acting major at Boston University. They are involved in a few clubs including BU On Tap and the BU EMS Club! Olivia wants to thank her family and friends for everything they've done to support her! ●

# BUD NOT BUDDY

April 14 - May 14, 2023



Adapted by  
**REGINALD ANDRÉ JACKSON**

Based on the novel by  
**CHRISTOPHER PAUL CURTIS**

Directed by  
**DAWN M. SIMMONS**



APRIL 14 - MAY 14, 2023



VISIT [WHEELLOCKFAMILYTHEATRE.ORG](http://WHEELLOCKFAMILYTHEATRE.ORG)  
FOR MORE INFORMATION



**WHEEL LOCK  
FAMILY  
THEATRE**

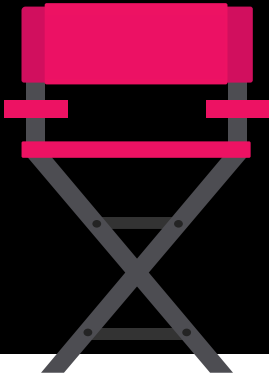
Produced by special arrangement with  
DRAMATIC PUBLISHING, Woodstock, Illinois

**BOSTON  
UNIVERSITY**

# PAPERLESS PROGRAM

FIND THIS PROGRAM AND OTHER ARCHIVED PRODUCTIONS ON OUR DIGITAL PUBLICATION READER BY SCANNING THIS CODE WITH YOUR PHONE CAMERA OR VISITING **BOSTON UNIVERSITY COLLEGE OF FINE ARTS** ON [ISSUU.COM](http://ISSUU.COM).

ACCESS  
THE DIGITAL  
PROGRAM  
LIBRARY



## **BOSTON UNIVERSITY JOAN & EDGAR BOOTH THEATRE**

Since its inaugural season in 2018, this bold, state-of-the-art facility encourages innovation, conversation, and collaboration. The flexible design of Booth Theatre allows for the inventive evolution of performances and a deep engagement with audiences. Research is at the core of Boston University, and BU College of Fine Arts practices it every day in the form of creative experimentation. Booth Theatre and the adjacent CFA Production Center are laboratories for such research, and in every detail, they are purpose-built for discovery. Recent productions include *Once*, *Let the Right One In*, *Little Women*, *Angels in America*, *Shakespeare in Love*, *If I Were You*, *The Rake's Progress*, *Mansfield Park*, *Dolores Claiborne*, *Patterns of Wind*, *The Lathe of Heaven*, ...and *Jesus Moonwalks the Mississippi*, and *The Exonerated*. Learn more at [bu.edu/booth](http://bu.edu/booth).

## **BOSTON UNIVERSITY COLLEGE OF FINE ARTS**

Established in 1954, Boston University College of Fine Arts (CFA) is a community of artist-scholars and scholar-artists who are passionate about the fine and performing arts, committed to diversity and inclusion, and determined to improve the lives of others through art. With programs in music, theatre, and visual arts, CFA prepares students for a meaningful creative life by developing their intellectual capacity to create art, shift perspective, and think broadly. CFA offers a wide array of precollege, undergraduate, graduate, and doctoral programs, as well as a range of online degrees and certificates. Learn more at [bu.edu/cfa](https://bu.edu/cfa).

## **BOSTON UNIVERSITY COLLEGE OF FINE ARTS SCHOOL OF THEATRE**

The School of Theatre at Boston University College of Fine Arts offers conservatory-style education for the study of acting, stage management, design, production, and all aspects of the theatre profession within the setting of a major research university. The School of Theatre seeks to provide students with opportunities for artistic growth through a rigorous curriculum, professional connections, and an emphasis on collaboration and new work. Learn more about the current BU School of Theatre production season and slate of projects at [bu.edu/cfa/theatre/season](https://bu.edu/cfa/theatre/season).

## **BOSTON UNIVERSITY COLLEGE OF COMMUNICATION**

Boston University College of Communication (COM) builds understanding through communication education, practice and discovery. Taught by both practitioner and research faculty, COM students pursue undergraduate, graduate and doctoral degrees across an array of disciplines: advertising, emerging media, film and television, journalism, media science, media ventures, public relations and screenwriting. Learn more at [bu.edu/com](https://bu.edu/com).

## **BOSTON UNIVERSITY COLLEGE OF COMMUNICATION DEPARTMENT OF FILM AND TELEVISION**

The Department of Film and Television at the College of Communication at Boston University is a nationally ranked program offering degrees in production, screenwriting, management, Film & TV studies, and media ventures. Our award-winning faculty combine theory and practice, drawing on a wealth of industry experience to prepare students for careers as both artists and professionals, while grounding each student in a rigorous liberal arts education. Whether your interest lies in fiction or non-fiction programming, scripted or unscripted content, arthouse or commercial entertainment, you will find a path to your future in Boston University's expansive course catalog.

[@buarts](https://bu.edu/cfa)

[@comatbu](https://bu.edu/com)



**College of Fine Arts**

School of Theatre

**College of Communication**

Film & Television